

# Pure Sagittal Chords

as related to C

by Andrew Meronek

**1:1, 4:3, 3:2**

C(sus4)

F(sus4)

G(sus4)

**1:1, 5:4, 3:2**

C

F

A $\flat$

**1:1, 6:5, 3:2**

Cm

Fm

Am

Musical notation for the first row of chords, showing C(sus4), F(sus4), G(sus4), C, F, A $\flat$ , Cm, Fm, and Am.

**1:1, 5:4, 25:16**

C $^+$

F $\flat^+$

A $\flat^+$

**1:1, 6:5, 36:25**

C $^\circ$

F $\sharp^\circ$

A $^\circ$

Musical notation for the second row of chords, showing C $^+$ , F $\flat^+$ , A $\flat^+$ , C $^\circ$ , F $\sharp^\circ$ , and A $^\circ$ .

**1:1, 5:4, 3:2, 5:3 (1:1, 6:5, 3:2, 9:5)**

C $^6$  or Am $^7$

F $^6$

A $\flat^6$

E $\flat^6$

**1:1, 5:4, 3:2, 15:8**

Cmaj $^7$

Fmaj $^7$

A $\flat$ maj $^7$

D $\flat$ maj $^7$

Musical notation for the third row of chords, showing C $^6$  or Am $^7$ , F $^6$ , A $\flat^6$ , E $\flat^6$ , Cmaj $^7$ , Fmaj $^7$ , A $\flat$ maj $^7$ , and D $\flat$ maj $^7$ .

**1:1, 4:3, 3:2, 16:9 (1:1, 9:8, 4:3, 3:2)**

C $^7$ (sus4)

F $^7$ (sus4)

G $^7$ (sus4)

D $^7$ (sus4)

**1:1, 6:5, 3:2, 5:3 (dis.)**

Cm $^6$

Fm $^6$

Am $^6$

E $\flat$ m $^6$

Musical notation for the fourth row of chords, showing C $^7$ (sus4), F $^7$ (sus4), G $^7$ (sus4), D $^7$ (sus4), Cm $^6$ , Fm $^6$ , Am $^6$ , and E $\flat$ m $^6$ .

**1:1, 6:5, 3:2, 15:8 (dis.)**

Cm(maj $^7$ )

Fm(maj $^7$ )

Am(maj $^7$ )

D $\flat$ m(maj $^7$ )

**1:1, 5:4, 3:2, 9:5 (dis.)**

C $^7$

F $^7$

A $\flat^7$

D $^7$

Musical notation for the fifth row of chords, showing Cm(maj $^7$ ), Fm(maj $^7$ ), Am(maj $^7$ ), D $\flat$ m(maj $^7$ ), C $^7$ , F $^7$ , A $\flat^7$ , and D $^7$ .

**1:1, 5:4, 3:2, 7:4**

C $^7$

F $^7$

A $\flat^7$

D $^7$

**1:1, 6:5, 3:2, 12:7**

Cm $^6$

Fm $^6$

Am $^6$

E $\flat$ m $^6$

Musical notation for the sixth row of chords, showing C $^7$ , F $^7$ , A $\flat^7$ , D $^7$ , Cm $^6$ , Fm $^6$ , Am $^6$ , and E $\flat$ m $^6$ .

1:1, 5:4, 25:16, 7:4 (1:1, 5:4, 7:5, 8:5)

C<sup>+7</sup> or E(b5)b13 Fb<sup>+7</sup> Ab<sup>+7</sup> D<sup>+7</sup>

1:1, 6:5, 36:25, 12:7 (1:1, 6:5, 10:7, 5:3)

C<sup>o7</sup> or Eb<sup>o7</sup> F#<sup>o7</sup> A<sup>o7</sup> Eb<sup>o7</sup>

Musical notation for the first system, showing two staves (treble and bass clef) with chords and accidentals. The chords are C<sup>+7</sup> or E(b5)b13, Fb<sup>+7</sup>, Ab<sup>+7</sup>, D<sup>+7</sup>, C<sup>o7</sup> or Eb<sup>o7</sup>, F#<sup>o7</sup>, A<sup>o7</sup>, and Eb<sup>o7</sup>.

1:1, 9:8, 4:3, 3:2, 16:9 (1:1, 9:8, 81:64, 3:2, 27:16) (dis.)

C<sup>9(sus4)</sup> or Bb<sup>6/9</sup> F<sup>9(sus4)</sup> G<sup>9(sus4)</sup> D<sup>9(sus4)</sup> Bb<sup>9(sus4)</sup>

Musical notation for the second system, showing two staves (treble and bass clef) with chords and accidentals. The chords are C<sup>9(sus4)</sup> or Bb<sup>6/9</sup>, F<sup>9(sus4)</sup>, G<sup>9(sus4)</sup>, D<sup>9(sus4)</sup>, and Bb<sup>9(sus4)</sup>.

1:1, 5:4, 3:2, 7:4, 9:8

C<sup>9</sup> F<sup>9</sup> Ab<sup>9</sup> D<sup>9</sup> Bb<sup>9</sup>

Musical notation for the third system, showing two staves (treble and bass clef) with chords and accidentals. The chords are C<sup>9</sup>, F<sup>9</sup>, Ab<sup>9</sup>, D<sup>9</sup>, and Bb<sup>9</sup>.

1:1, 6:5, 3:2, 12:7, 4:3

Cm6add4 Fm6add4 Am6add4 Ebm6add4 Gm6add4

Musical notation for the fourth system, showing two staves (treble and bass clef) with chords and accidentals. The chords are Cm6add4, Fm6add4, Am6add4, Ebm6add4, and Gm6add4.

1:1, 5:4, 25:16, 7:4, 9:8 (1:1, 5:4, 7:5, 8:5, 9:5)

C<sup>+9</sup> or E7(<sup>b</sup>13/<sup>#</sup>11) Fb<sup>+9</sup> Ab<sup>+9</sup> D<sup>+9</sup> Bb<sup>+9</sup>

Musical notation for the fifth system, showing two staves (treble and bass clef) with chords and accidentals. The chords are C<sup>+9</sup> or E7(<sup>b</sup>13/<sup>#</sup>11), Fb<sup>+9</sup>, Ab<sup>+9</sup>, D<sup>+9</sup>, and Bb<sup>+9</sup>.

**1:1, 5:4, 3:2, 15:8, 9:8 (1:1, 6:5, 3:2, 8:5, 9:5)**

Cmaj<sup>9</sup> or Em<sup>7(b6)</sup>

Fmaj<sup>9</sup>

A<sup>b</sup>maj<sup>9</sup>

D<sup>b</sup>maj<sup>9</sup>

B<sup>b</sup>maj<sup>9</sup>

Musical notation for the first system, showing chords Cmaj<sup>9</sup> or Em<sup>7(b6)</sup>, Fmaj<sup>9</sup>, A<sup>b</sup>maj<sup>9</sup>, D<sup>b</sup>maj<sup>9</sup>, and B<sup>b</sup>maj<sup>9</sup> in a two-staff format.

**1:1, 5:4, 3:2, 7:4, 9:8, 11:8**

C<sup>9</sup>(#11)

F<sup>9</sup>(#11)

A<sup>b</sup><sup>9</sup>(#11)

D<sup>9</sup>(#11)

B<sup>b</sup><sup>9</sup>(#11)

G<sup>b</sup><sup>9</sup>(#11)

Musical notation for the second system, showing chords C<sup>9</sup>(#11), F<sup>9</sup>(#11), A<sup>b</sup><sup>9</sup>(#11), D<sup>9</sup>(#11), B<sup>b</sup><sup>9</sup>(#11), and G<sup>b</sup><sup>9</sup>(#11) in a two-staff format.

**1:1, 5:4, 3:2, 15:8, 9:8, 11:8 (1:1, 11:10, 6:5, 3:2, 8:5, 9:5)**

Cmaj<sup>9</sup>(#11) or Em<sup>9</sup>(b6)

Fmaj<sup>9</sup>(#11)

A<sup>b</sup>maj<sup>9</sup>(#11)

D<sup>b</sup>maj<sup>9</sup>(#11)

B<sup>b</sup>maj<sup>9</sup>(#11)

G<sup>b</sup>maj<sup>9</sup>(#11)

Musical notation for the third system, showing chords Cmaj<sup>9</sup>(#11) or Em<sup>9</sup>(b6), Fmaj<sup>9</sup>(#11), A<sup>b</sup>maj<sup>9</sup>(#11), D<sup>b</sup>maj<sup>9</sup>(#11), B<sup>b</sup>maj<sup>9</sup>(#11), and G<sup>b</sup>maj<sup>9</sup>(#11) in a two-staff format.

**1:1, 5:4, 3:2, 15:8, 9:8, 45:32 (1:1, 9:8, 6:5, 3:2, 8:5, 9:5)**

Cmaj<sup>9</sup>(#11) or Em<sup>9</sup>(b6)

Fmaj<sup>9</sup>(#11)

A<sup>b</sup>maj<sup>9</sup>(#11)

D<sup>b</sup>maj<sup>9</sup>(#11)

B<sup>b</sup>maj<sup>9</sup>(#11)

G<sup>b</sup>maj<sup>9</sup>(#11)

Musical notation for the fourth system, showing chords Cmaj<sup>9</sup>(#11) or Em<sup>9</sup>(b6), Fmaj<sup>9</sup>(#11), A<sup>b</sup>maj<sup>9</sup>(#11), D<sup>b</sup>maj<sup>9</sup>(#11), B<sup>b</sup>maj<sup>9</sup>(#11), and G<sup>b</sup>maj<sup>9</sup>(#11) in a two-staff format.

**1:1, 5:4, 3:2, 7:4, 9:8, 45:32**

C<sup>9</sup>(#11)

F<sup>9</sup>(#11)

A<sup>b</sup><sup>9</sup>(#11)

D<sup>9</sup>(#11)

B<sup>b</sup><sup>9</sup>(#11)

G<sup>b</sup><sup>9</sup>(#11)

Musical notation for the fifth system, showing chords C<sup>9</sup>(#11), F<sup>9</sup>(#11), A<sup>b</sup><sup>9</sup>(#11), D<sup>9</sup>(#11), B<sup>b</sup><sup>9</sup>(#11), and G<sup>b</sup><sup>9</sup>(#11) in a two-staff format.

1:1, 6:5, 3:2, 12:7, 4:3, 12:11

Cm6/9add4 Fm6/9add4 Am6/9add4 Ebm6/9add4 Gm6/9add4 Bm6/9add4

Musical notation for Cm6/9add4 chord progression. The diagram shows two staves (treble and bass clef) with notes and fingerings for the chords: Cm6/9add4, Fm6/9add4, Am6/9add4, Ebm6/9add4, Gm6/9add4, and Bm6/9add4. Fingerings are indicated by numbers 1-4 and arrows for up/down strokes.

1:1, 5:4, 3:2, 7:4, 9:8, 11:8, 13:8

C<sup>13</sup>(#11) F<sup>13</sup>(#11) A<sup>b13</sup>(#11) D<sup>13</sup>(#11) B<sup>b13</sup>(#11) G<sup>b13</sup>(#11) E<sup>13</sup>(#11)

Musical notation for C<sup>13</sup>(#11) chord progression. The diagram shows two staves (treble and bass clef) with notes and fingerings for the chords: C<sup>13</sup>(#11), F<sup>13</sup>(#11), A<sup>b13</sup>(#11), D<sup>13</sup>(#11), B<sup>b13</sup>(#11), G<sup>b13</sup>(#11), and E<sup>13</sup>(#11). Fingerings are indicated by numbers 1-4 and arrows for up/down strokes.

1:1, 6:5, 3:2, 12:7, 4:3, 12:11, 24:13

Cm(maj13) Fm(maj13) Am(maj13) Ebm(maj13) Gm(maj13) Bm(maj13) Dbm(maj13)

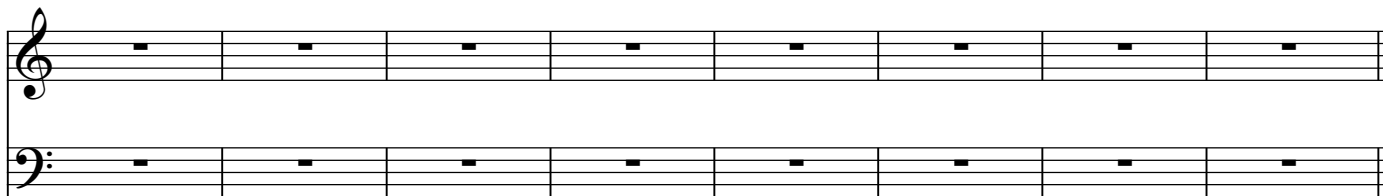
Musical notation for Cm(maj13) chord progression. The diagram shows two staves (treble and bass clef) with notes and fingerings for the chords: Cm(maj13), Fm(maj13), Am(maj13), Ebm(maj13), Gm(maj13), Bm(maj13), and Dbm(maj13). Fingerings are indicated by numbers 1-4 and arrows for up/down strokes.

1:1, 5:4, 3:2, 15:8, 9:8, 45:32, 27:16 (1:1, 9:8, 6:5, 27:20, 3:2, 8:5, 9:5) (dis.)

Cmaj9(#11) or Em<sup>9(b6)</sup> Fmaj9(#11) A<sup>b</sup>maj9(#11) D<sup>b</sup>maj9(#11) B<sup>b</sup>maj9(#11) G<sup>b</sup>maj9(#11) E<sup>b</sup>maj9(#11)

Musical notation for Cmaj9(#11) chord progression. The diagram shows two staves (treble and bass clef) with notes and fingerings for the chords: Cmaj9(#11) or Em<sup>9(b6)</sup>, Fmaj9(#11), A<sup>b</sup>maj9(#11), D<sup>b</sup>maj9(#11), B<sup>b</sup>maj9(#11), G<sup>b</sup>maj9(#11), and E<sup>b</sup>maj9(#11). Fingerings are indicated by numbers 1-4 and arrows for up/down strokes.

1:1, 5:4, 3:2, 7:4, 9:8, 11:8, 13:8, 15:8



1:1, 6:5, 3:2, 12:7, 4:3, 12:11, 24:13, 8:5

